



AR-α1B Polyclonal Antibody

| | |
|---------------------------|--|
| Catalog No | YP-Ab-13147 |
| Isotype | IgG |
| Reactivity | Human;Mouse;Rat |
| Applications | WB;IF;ELISA |
| Gene Name | ADRA1B |
| Protein Name | Alpha-1B adrenergic receptor |
| Immunogen | The antiserum was produced against synthesized peptide derived from human ADRA1B. AA range:431-480 |
| Specificity | AR-α1B Polyclonal Antibody detects endogenous levels of AR-α1B protein. |
| Formulation | Liquid in PBS containing 50% glycerol, 0.5% BSA and 0.02% sodium azide. |
| Source | Polyclonal, Rabbit,IgG |
| Purification | The antibody was affinity-purified from rabbit antiserum by affinity-chromatography using epitope-specific immunogen. |
| Dilution | Western Blot: 1/500 - 1/2000. Immunofluorescence: 1/200 - 1/1000. ELISA: 1/20000. Not yet tested in other applications. |
| Concentration | 1 mg/ml |
| Purity | ≥90% |
| Storage Stability | -20°C/1 year |
| Synonyms | ADRA1B; Alpha-1B adrenergic receptor; Alpha-1B adrenoreceptor; Alpha-1B adrenoceptor |
| Observed Band | 60kD |
| Cell Pathway | Nucleus membrane; Multi-pass membrane protein. Cell membrane ; Multi-pass membrane protein . Cytoplasm . Membrane, caveola . Location at the nuclear membrane facilitates heterooligomerization and regulates ERK-mediated signaling in cardiac myocytes. signaling in cardiac myocytes. Colocalizes with GNAQ, PLCB1 as well as LAP2 at the nuclear membrane of cardiac myocytes. |
| Tissue Specificity | Brain, |
| Function | function:This alpha-adrenergic receptor mediates its action by association with G proteins that activate a phosphatidylinositol-calcium second messenger system.,similarity:Belongs to the G-protein coupled receptor 1 family., |
| Background | Alpha-1-adrenergic receptors (alpha-1-ARs) are members of the G protein-coupled receptor superfamily. They activate mitogenic responses and regulate growth and proliferation of many cells. There are 3 alpha-1-AR subtypes: alpha-1A, -1B and -1D, all of which signal through the Gq/11 family of G-proteins and different subtypes show different patterns of activation. This gene encodes alpha-1B-adrenergic receptor, which induces neoplastic transformation when transfected into NIH 3T3 fibroblasts and other cell lines. Thus, this normal cellular |



gene is identified as a protooncogene. This gene comprises 2 exons and a single large intron of at least 20 kb that interrupts the coding region. [provided by RefSeq, Jul 2008],

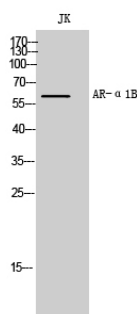
matters needing attention

Avoid repeated freezing and thawing!

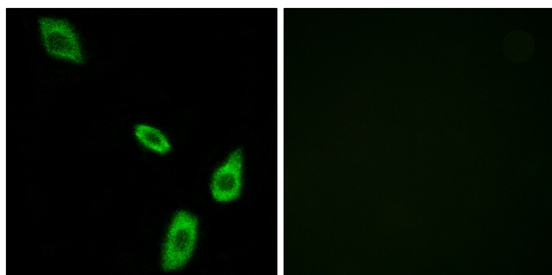
Usage suggestions

This product can be used in immunological reaction related experiments. For more information, please consult technical personnel.

Products Images



Western Blot analysis of JK cells using AR-α1B Polyclonal Antibody



Immunofluorescence analysis of LOVO cells, using ADRA1B Antibody. The picture on the right is blocked with the synthesized peptide.